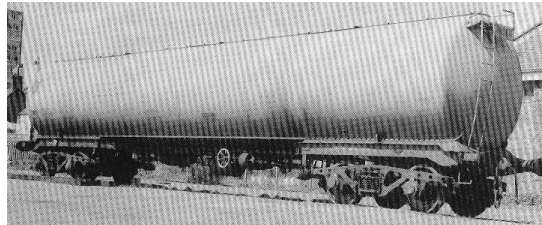


prmrp1@gmail.com  
Tel: 07807225801  
www.prmrp.com

## **BRF-015 TEA Bogie Tank Wagon**

### **Building Instructions**



**SCALE MODEL PRODUCT FOR ADULT MODELLERS ONLY.  
WHITE METAL CONTAINS LEAD - WASH HANDS AFTER USE.  
MAY CONTAIN SMALL PARTS. ETCHED BRASS HAS FUNCTIONAL  
SHARP EDGES - HANDLE WITH EXTREME CARE**

Thank you for purchasing this kit.

This instruction pack should provide an easy to follow guide for building this model given some experience of soldering and the basics of etched kit construction.

Drawings and photos are essential for builders to acquaint themselves with the prototype they wish to model.

For builders of modern image in 7mm, consider joining MIGO+1, the Modern Image Gauge 0/1 organisation. For more details see the MIGO+1 website at [www.migo.org](http://www.migo.org)

# BRF-015 TYPE TEA 100T BOGIE TANKER

NOTE BEFORE DOING ANYTHING -  
CUT SOLEBAR CHANNELS TO 397mm  
CUT ANGLE SECTIONS TO 374mm  
UPON THE ACCURACY OF THIS DEPENDS  
THE REST OF THE MODEL.

**Parts List.**

- Etched Sheet.
- Barrel.
- 2 Lengths Brass Channel.
- 2 Lengths Brass Angle.
- 2 Coupling Springs.
- 2 Split Pins.
- 4 Coupling Links.
- 2 Screws & Nuts.

**Castings.**

- 4 Bogie Sides/ends.
- 4 Buffers.
- 2 Air Brake Cylinders.
- 2 Brake Linkage assys.
- 1 Air Tank.
- 1 Distributor Valve.
- 4 Load Discharge Units.
- 2 Sets Air Pipes.
- 2 Tank Ends.
- 2 Tank Filler Caps.
- 2 Tank Vents.

Fold up Filler Point Platforms & fit hard  
up against the ends of Walkways as shown

It is best fit Ends into Tank Barrel with  
Evo-Stick. The Tank itself may need some  
final tidying up but is 95% formed. The  
Joint Line on the bottom of the Tank is  
safely hidden between Channel Solebar Sections.

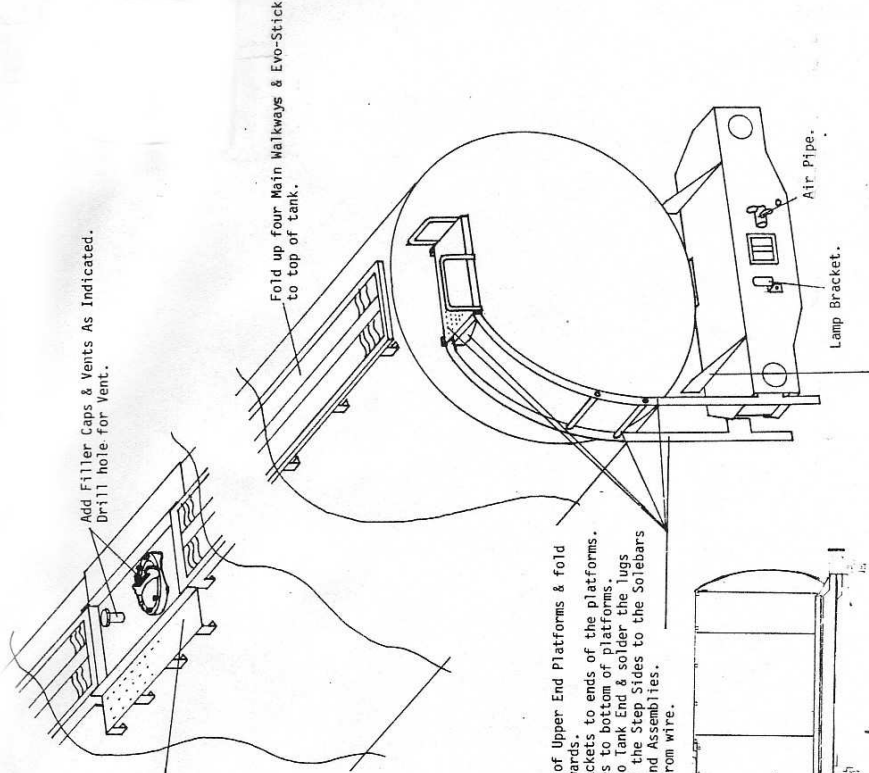
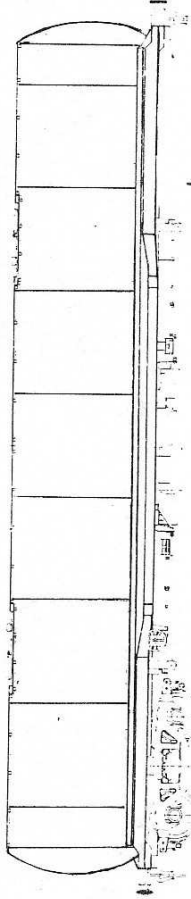
Wagon requires 4 x 3" 1" 3 hole wheels - GEN-090

Single Air Pipe System - BR are rapidly going  
over to this system for wagons & so the lower  
hole for the Reservoir pipe is only etched from  
the rear. It can be drilled out if a Twin Pipe  
Layout is to be modelled.

**OPTIONAL ACCESSORY PACKS THAT CAN BE USED WITH TEA.**

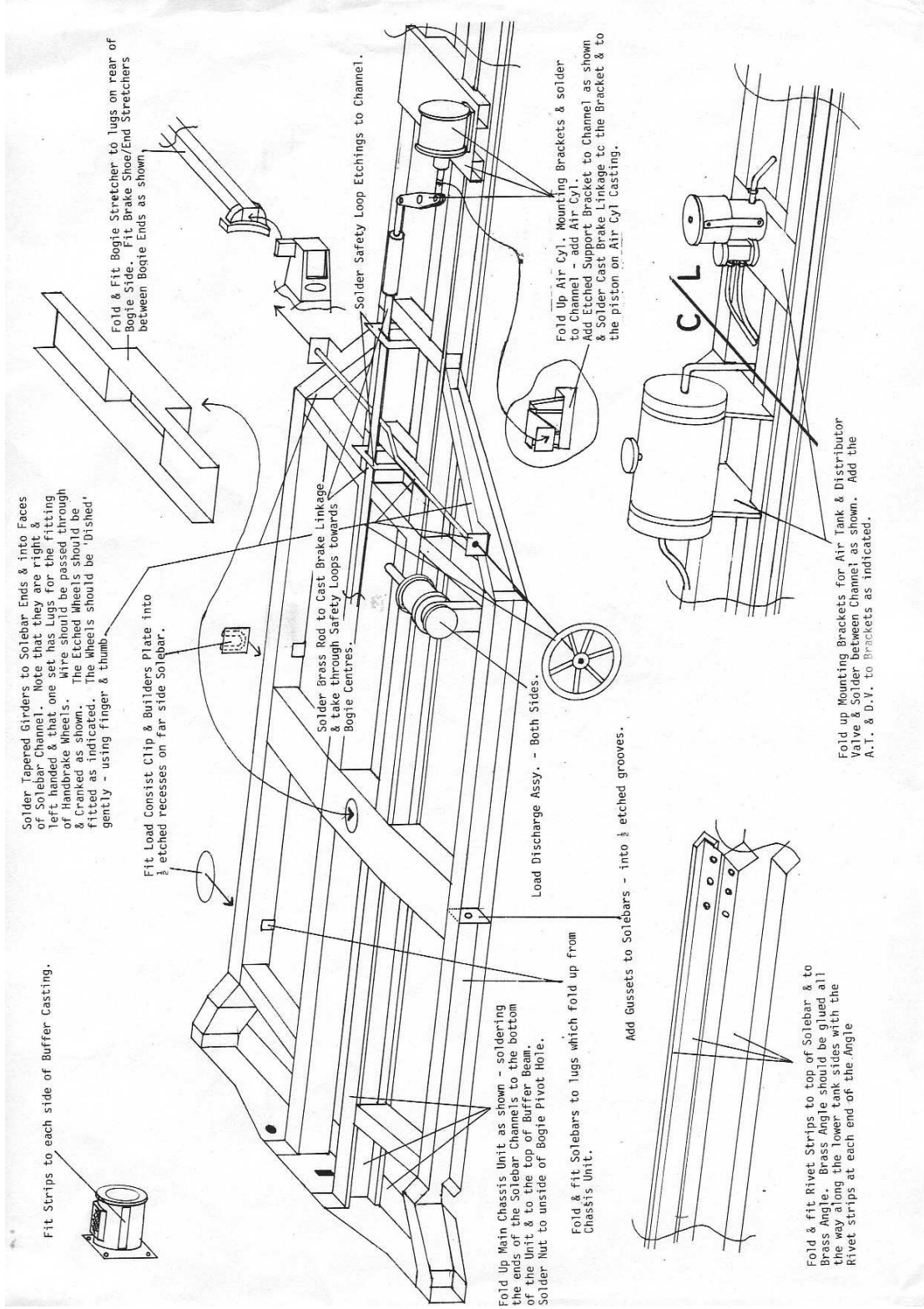
1. Standard Sprung Oval Loco Buffers.
2. Lost-Wax Working Air Pipes.

Cross-reference all drawings with side sketch  
below.



Fold Down Sides of Upper End Platforms & fold  
safety rails upwards.  
Fit Mounting Brackets to ends of the platforms.  
Solder Step Sides to bottom of platforms.  
Fit Whole unit to Tank End & solder the lugs  
on the bottom of the Step Sides to the Solebars  
on the Chassis End Assemblies.  
Add Step Rungs from wire.

Etched Fairings - into slots on End Platform.



Fit Strips to each side of Buffer Casting.

Solder Tapered Girders to Solebar Ends & into Faces of Solebar Channel. Note that they are right & left handed & that one set has Lugs for the fitting of Handbrake Wheels. Wire should be passed through & Cranked as shown. The Etched Wheels should be fitted as indicated. The Wheels should be 'dished' gently - using finger & thumb.

Fit Load Consist Clip & Builders Plate into etched recesses on far side Solebar.

Solder Brass Rod to Cast Brake Linkage & take through Safety Loops towards Bogie Centres.

Solder Safety Loop Etchings to Channel.

Fold Up Main Chassis Unit as shown - soldering the ends of the Solebar Channels to the bottom of the Unit & to the top of Buffer Beam. Solder Nut to inside of Bogie Pivot Hole.

Fold & fit Solebars to lugs which fold up from Chassis Unit.

Add Gussets to Solebars - into etched grooves.

Fold Up Air Cyl. Mounting Brackets & solder to Channel - add Air Cyl. Add Etched Support Bracket to Channel as shown & Solder Cast Brake Linkage to the Bracket & to the piston on Air Cyl Casting.

Fold & fit Rivet Strips to top of Solebar & to Brass Angle. Brass Angle should be glued all the way along the lower tank sides with the Rivet strips at each end of the Angle.

Fold up Mounting Brackets for Air Tank & Distributor Valve & Solder between Channel as shown. Add the A.T. & D.V. to Brackets as indicated.