

07807225801  
prmrp@fsmail.net  
www.prmrp.com



## **BRF-016 TTB Tank Wagon**

### **Building Instructions**

**SCALE MODEL PRODUCT FOR ADULT MODELLERS ONLY.  
WHITE METAL CONTAINS LEAD - WASH HANDS AFTER USE.  
MAY CONTAIN SMALL PARTS. ETCHED BRASS HAS FUNCTIONAL  
SHARP EDGES - HANDLE WITH EXTREME CARE**

Thank you for purchasing this kit.

This instruction pack should provide an easy to follow guide for building this model given some experience of soldering and the basics of etched kit construction.

Drawings and photos are essential for builders to acquaint themselves with the prototype they wish to model.

For builders of modern image in 7mm, consider joining MIGO+1, the Modern Image Gauge 0/1 organisation. For more details see the MIGO+1 website at [www.migo.org](http://www.migo.org)

# BRF-016 TYPE TTB 45T TANK WAGON

Parts List

- Etchings.  
 1 Pre-Formed Barrel.  
 2 Couplings Springs & Split Pins.  
 4 Coupling Links.

Castings

- 2 Tank Ends.  
 1 Filler Cap.  
 1 Control Wheel Base.  
 4 Buffers.  
 2 Vac. Pipes.  
 2 Sets of Air Pipes.  
 4 Axleguards.  
 8 Suspension Brackets.  
 1 Distributor Valve.  
 1 Air Tank.  
 1 Air Brake Cylinder.  
 1 Brake Compensator.  
 4 Pairs Brake Shoe Hangers.  
 4 Brake Yokes.  
 2 Load Discharge Assemblies.

Single Air Pipe System. - BR are rapidly going over to a this system for wagons & so the lower hole for the Reservoir Pipe is only 1/2 etched from the rear. This hole is to be out if a Twin Pipe Layout is to be modelled. Of course by leaving of the Vac. Pipe Assys. you can model a TTB in either Single or Double Air Pipe configuration.

Use 3 Hole Wagon Wheels/Bearings

Fold & glue etched walkway to top of barrel.  
 Glue the Filler cap & control wheel base castings to the top of the barrel, and the etched control wheel to the base casting.  
 The control wheel assy is fixed dead centre on the barrel & it is the position of this item that dictates the position of the roof walkway.

Solder Solebar into 1/2 etched grooves on the underside of floor.

Fit Brake levers to rear of 'V' Hangers - after positioning them through Pin Guides. The Pin Guides should be folded & soldered to the strip that folds up from the bottom of the solebar.

Fit 'V' hangers into slots in solebars. Note that the hanger with the 'I' shaped bracket for brake reversing rod goes on the side with the air tank/dist. valve etc.

Load Discharge Assy. Casting - Both Sides.

Distributor Valve.

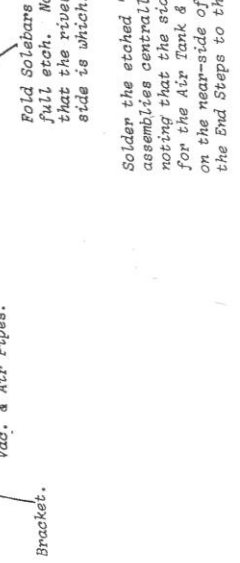
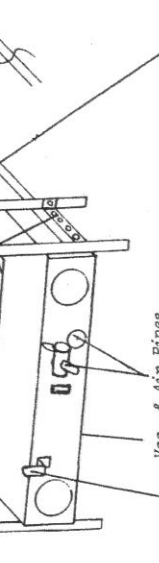
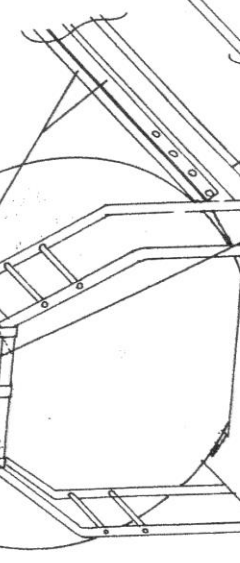
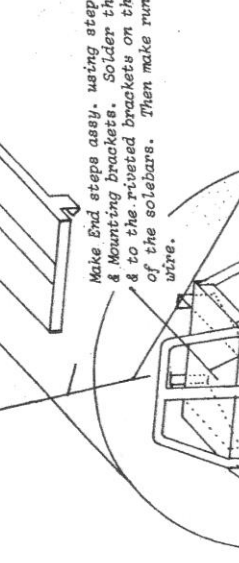
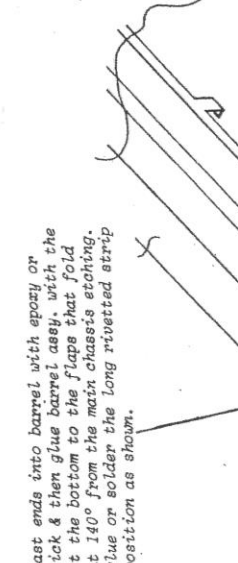
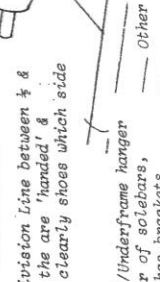
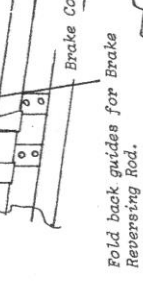
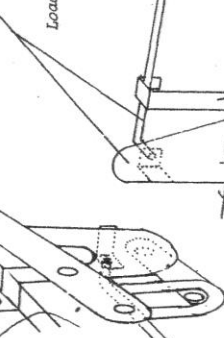
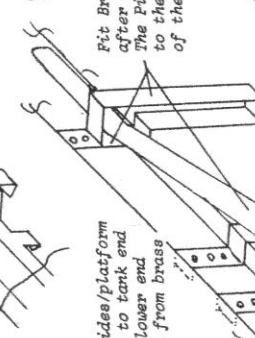
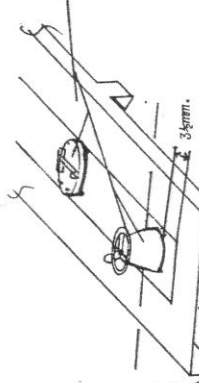
Add wire rod between 'V' Hangers.

Push through rivet detail on reverse of 'W' Iron

Fit Suspension Brackets on Platforms - on this bracket only you will have to file a rebate in the bracket casting so as to clear the adjacent etched hanger.

Other side has Air Brake Cyl. only - just to the left of the load discharge assy.

Other side.



cast ends into barrel with epoxy or stick & then glue barrel assy. with the at the bottom to the flaps that fold at 140° from the main chassis etching. glue on solder the long rivetted strip position as shown.

Make End steps assy. using step sides/platform & Mounting brackets. Solder this to tank end & to the riveted brackets on the lower end of the solebars. Then make rungs from brass wire.

Fold Solebars along Division line between 1/2 & full etch. Note that the are 'handed' & that the rivet detail clearly shows which side side is which.

Solder the etched 'W' Iron/Underframe hanger assemblies centrally to rear of solebars, noting that the side which has brackets for the Air Tank & Dist. Valve etc. goes on the rear-side of wagon when viewed with the End Steps to the right hand end.

Fold back guides for Brake Reversing Rod.

Vac. & Air Pipes.

Bracket.

Solder cast brake shoe hangers to rear of 'W' Irons & then solder brake Yokes between the brake shoes.